



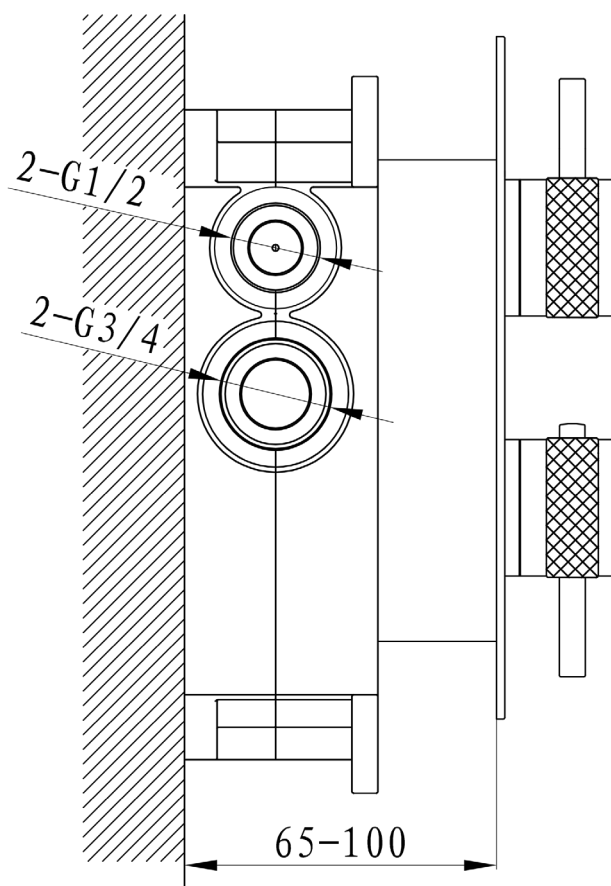
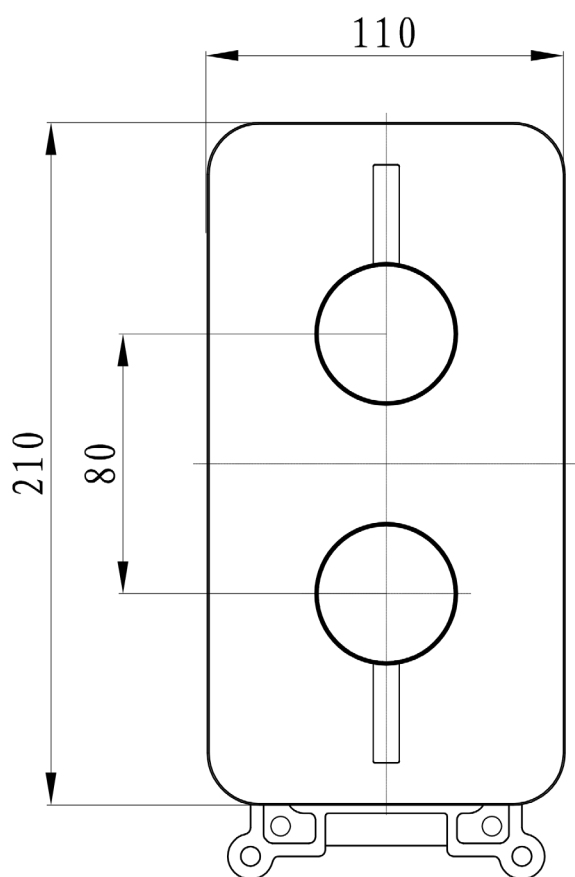
AQUALLA®

Technical Data Sheet | Components

Design Collection Concealed Valve Dual 2 Outlet (Vertical) DR-D2

Specification

Finish	Chrome, Gunmetal Grey, Matt Black, Brushed Nickel, Brushed Brass
Min Operating Pressure	1 Bar
Thermostatically Controlled	Yes
Fitting	EasyFit Box, Integrated Mounting Brackets
Connection	Inlet 3/4" & Outlet 1/2"



Notes

Key Features + Benefits



Years
Warranty

Aqualla Brassware

Unit 3 & 4 16 Crawfordsburn Road Newtownards County Down BT23 4EA. Technical Support – Tel: +44 (0) 28 9182 8000 Email: support@aquallabrassware.com

All information on the data sheet is correct at the time of publication. All measurements are approximate and subject to standard tolerances.

18 Year Warranty on purchases from 1st March 2025 (T&Cs Apply)

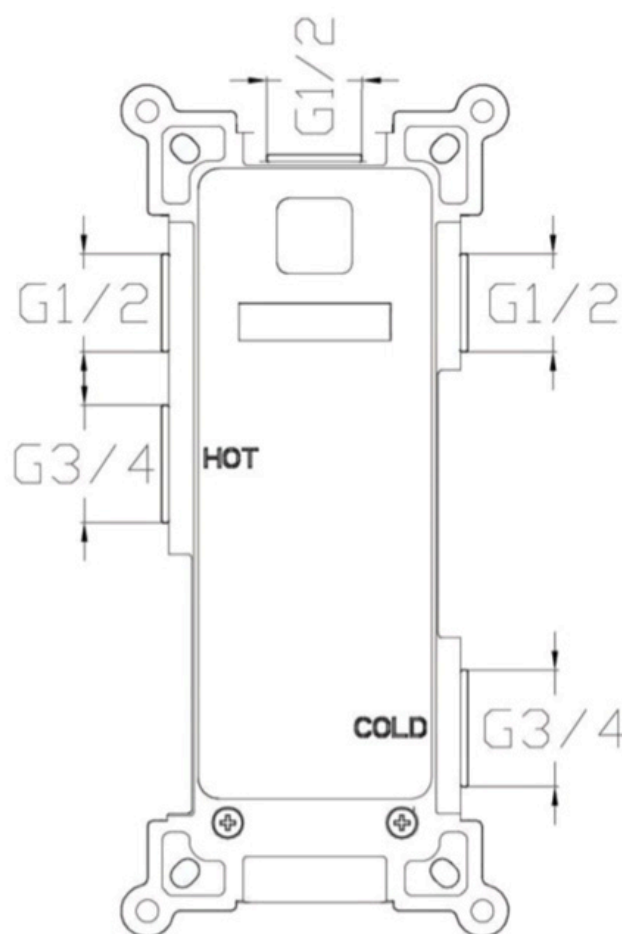
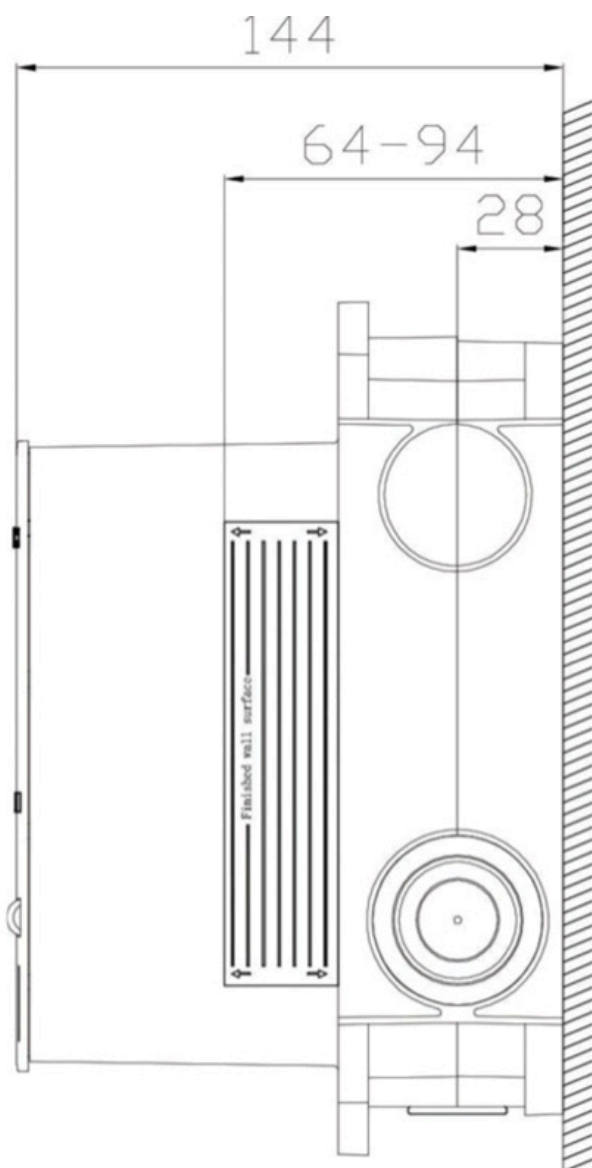
Issue No. **v1 03 2025**

Technical Data Sheet | Components

EasyFit Box Body (OG)

Specification

Fitting	Integrated Mounting Brackets
Orientation	Vertical Only
Connection	G1/2 & G3/4



Notes

Key Features + Benefits



**Years
Warranty**

Aqualla Brassware

Unit 3 & 4 16 Crawfordsburn Road Newtownards County Down BT23 4EA. Technical Support – Tel: +44 (0) 28 9182 8000 Email: support@aquallabrassware.com

All information on the data sheet is correct at the time of publication. All measurements are approximate and subject to standard tolerances.

18 Year Warranty on purchases from 1st March 2025 (T&Cs Apply)

Issue No. **v1 03 2025**

Technical Data Sheet | Components

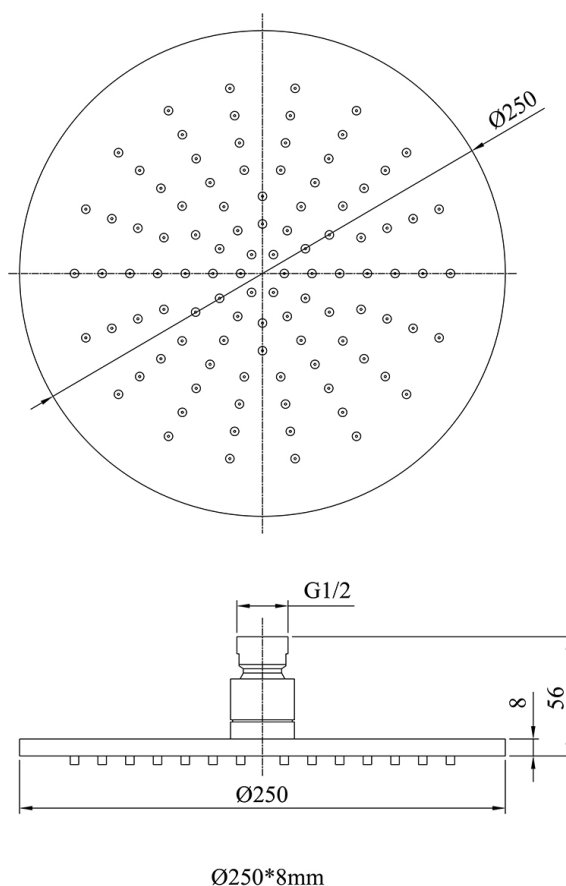
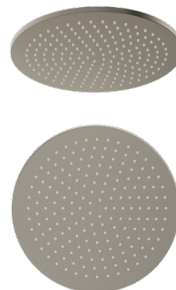
Round Brass Shower Head 250mm LS25

Specification

Finish	Chrome, Brushed Bronze, Gunmetal Grey, Matt Black, Brushed Nickel, Brushed Brass
Connection	G1/2"
Flow Restrictor	Yes
Min Operating Pressure	0.5 Bar
Max Operating Pressure	5.0 Bar

Flow Rates

Pressure	0.5	1	3	5
Flow Aerator	9.1	13	23.1	30



Notes

Key Features + Benefits



Years
Warranty

Aqualla Brassware

Unit 3 & 4 16 Crawfordsburn Road Newtownards County Down BT23 4EA. Technical Support – Tel: +44 (0) 28 9182 8000 Email: support@aquallabrassware.com

All information on the data sheet is correct at the time of publication. All measurements are approximate and subject to standard tolerances.

18 Year Warranty on purchases from 1st March 2025

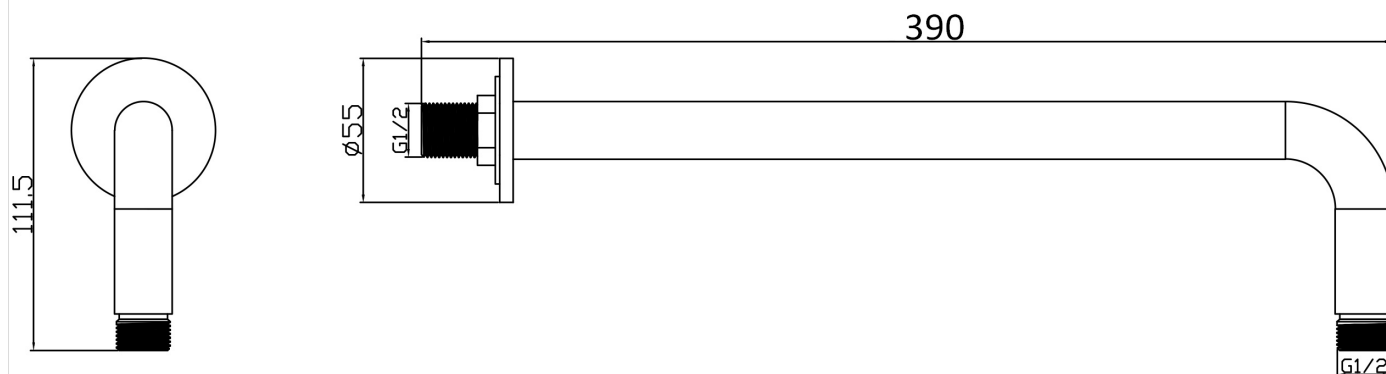
Issue No. **v1 03 2025**

Technical Data Sheet | Components

Curved Shower Arm CSA

Specification

Finish	Chrome, Brushed Bronze, Gunmetal Grey, Matt Black, Brushed Nickel, Brushed Brass
Connection	G 1/2"



Notes

Key Features + Benefits



**Years
Warranty**

Aqualla Brassware

Unit 3 & 4 16 Crawfordsburn Road Newtownards County Down BT23 4EA. Technical Support – Tel: +44 (0) 28 9182 8000 Email: support@aquallabrassware.com

All information on the data sheet is correct at the time of publication. All measurements are approximate and subject to standard tolerances.

18 Year Warranty on purchases from 1st March 2025

Issue No. **v2 03 2025**

Technical Data Sheet | Components

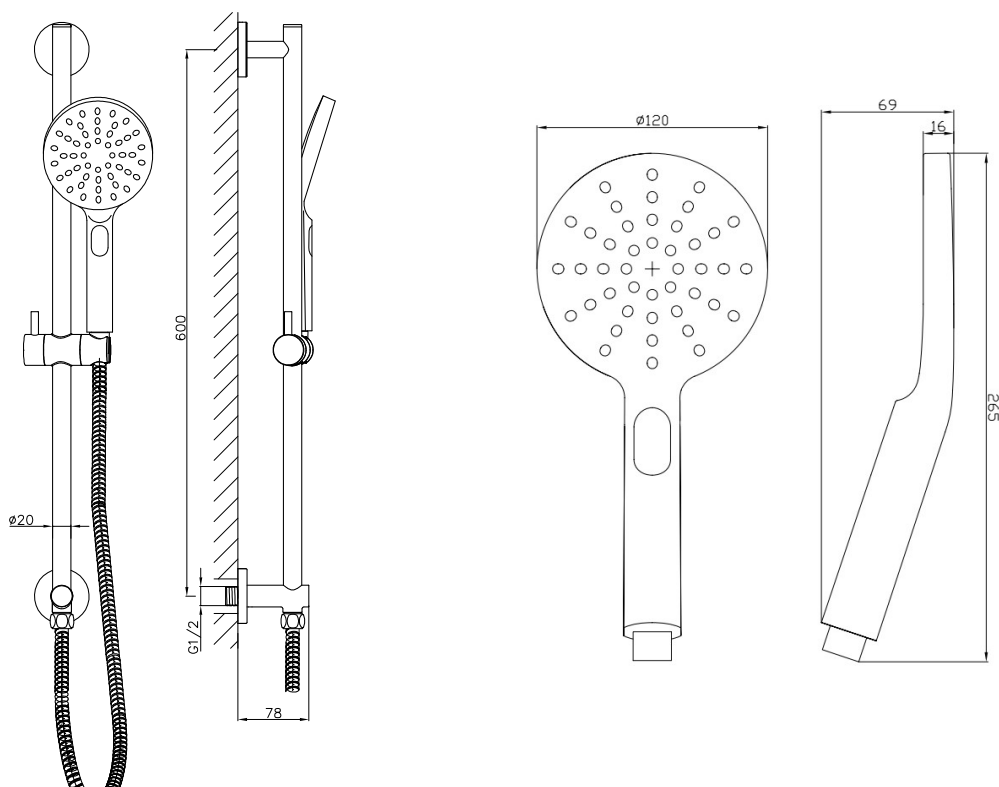
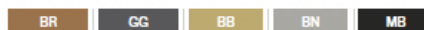
Luca Plus Triple Mode Slide Rail Kit KO-SRK, FU-SRK

Specification

Finish	Brushed Bronze, Gunmetal Grey, Matt Black, Brushed Nickel, Brushed Brass
Dimensions	600(h) x 78(d)
Handset Type	Paddle
Hose Type	Smooth
Connection	G1/2"
Flow Restrictor	Yes
Min Operating Pressure	0.5 Bar
Max Operating Pressure	5.0 Bar

Flow Rates

Pressure	0.5	1	3	5
Flow Aerator	3.3	4.7	7.3	7.6



Notes

Key Features + Benefits



**Years
Warranty**

Aqualla Brassware

Unit 3 & 4 16 Crawfordsburn Road Newtownards County Down BT23 4EA. Technical Support – Tel: +44 (0) 28 9182 8000 Email: support@aquallabrassware.com

All information on the data sheet is correct at the time of publication. All measurements are approximate and subject to standard tolerances.

18 Year Warranty on purchases from 1st March 2025

Issue No. **v2 03 2025**